

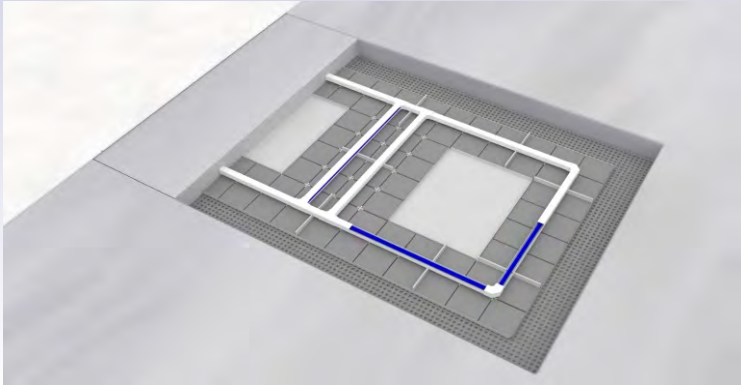


**You don't have to
be visible to do
your job.**



SURECHECK[®]
advanced electronic security systems

FLOOR SYSTEM DIGITAL SECURITY SYSTEM



Floor system can be installed with or without ferrite as per requirement. All systems have built-in detection of tags. The system can be configured remotely.

FEATURES

- Protects exits up to 6 feet wide
- Non-visible system hidden in the floor
- If the substrate is not secured, a ferrite can be supplied for maximising detection
- As an option, you can supply a ceiling unit for maximum detection. increase of up to 2,3m
- Environmentally friendly design saves electricity by turning the system off outside working hours
- Possibility of remote maintenance makes service handling easy and quick

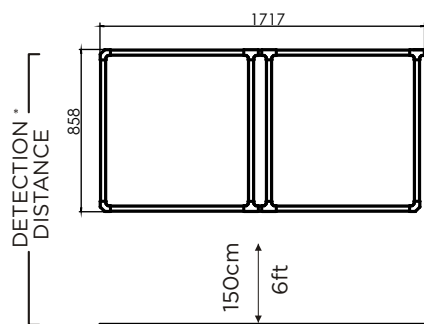
OPTIONAL ACCESSORIES

- Remote connection for control unit makes field maintenance easy and quick
- Reporting server based software can provide additional information
- Alarms information can be send to the display ather than sounding an audible alarm

POWER SUPPLY

- Primary adaptor input: 100-120VAC @ 60Hz, 220-240VAC @ 50Hz
- Power supply adaptor: 24V DC, 2.1A
- Electric board fuse: 1A, 250V
- Consumption: max. 20W

TECHNICAL SPECIFICATIONS



PEDESTAL

DIMENSIONS	Height:	35mm (1.4 in)
	Width:	1717mm (67.6 in)
	Depth:	858mm (33.8 in)
	Weight:	6,75kg (14.8 lbs)

CONTROL UNIT

DIMENSIONS	Height:	115mm (4.5 in)
	Width:	249mm (9.8 in)
	Depth:	267mm (10.5 in)
	Weight:	6,7kg (14.7 lbs)

PARAMETERS

Controller outputs: 2 ports

Controller inputs: 4 ports

*maximum detection distance with sticker label